

# XD7800NT Ruby XL

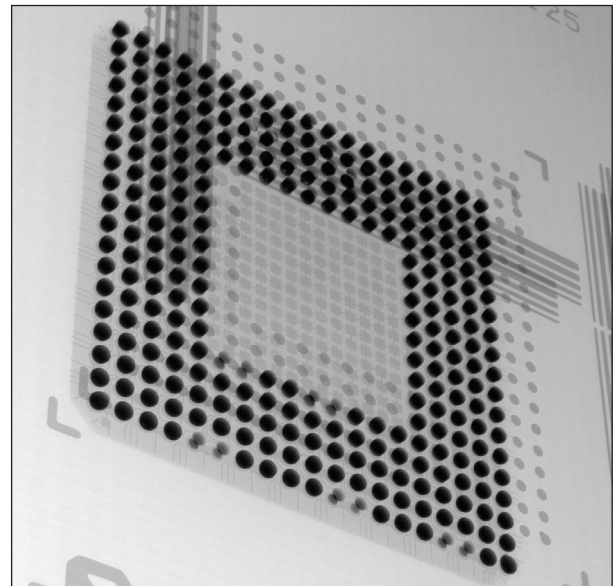
X-ray Inspection System

## The Solution for Large Board Applications

### Advantages

- Nordson DAGE NT500 Maintenance-Free, Sealed-Transmissive X-ray Tube
- Proveable < 0.5  $\mu\text{m}$  Feature Recognition
- 160 kV Tube with Up to 10 W Target Power - Always Retains Sub-Micron Ability
- Nordson DAGE 2 Mpixel @ 25fps  $\chi$ iDAT3 Digital Image Intensifier with Real Time Image Enhancements
- Geometric Magnification 1,800 X, System 7,800 X and Total 23,400 X with Digital Zoom
- 47" x 26.4" (1205 x 672 mm) Maximum Board Size
- 70° Oblique Views without Loss of Magnification
- Two 24" TFT LCD Monitors
- AXiS - Active X-ray Image Stabilisation
- No Programming Skills Required for Automated Inspection Tasks
- Options: X-Plane™; Joysticks

Nordson DAGE, the only x-ray company whose focus is on x-ray electronics inspection, offers the Nordson DAGE XD7800NT Ruby XL x-ray inspection system as the optimum solution for large boards. The unique Nordson DAGE NT maintenance-free, sealed-transmissive x-ray tube, providing 0.5  $\mu\text{m}$  feature recognition and up to 10 W of target power, together with the 2 Mpixel  $\chi$ iDAT3 digital image intensifier makes this jewel of a system cover all the failure analysis and manufacturing tasks required in the production environment.



BGA with Open Joints

The vertical system configuration, with the x-ray tube sitting below the isocentric 'move and tilt' of the detector, all controlled through simple, joystick-free, 'point and click' operation, provides the safe, collision-free and high magnification inspection required for production applications. All these tasks can be simply and quickly automated from within the Nordson DAGE Image Wizard software without the need for programming skills. Optional upgrades include X-Plane™ and joystick control.

**Crystal Clear X-ray Inspection. Nordson DAGE.**

# XD7800NT Ruby XL X-ray Inspection System

## Specifications

- Nordson DAGE NT500 sealed-transmissive, filament-free x-ray tube:
  - < 0.5 µm feature recognition 30 - 160 kV for < 4 W target power
  - < 0.95 µm feature recognition when above 4 W target power
  - 10 W max. target power above 110 kV
  - automated tube stabilisation
  - 2 years tube warranty
- 1,800 X geometric magnification (7,800 X system magnification)
- 23,400 X total magnification including digital zoom
- Easy, collision-free, high magnification inspection:
  - even at oblique angle views
  - joystick-free, 'point and click' operation
- Maximum board size: 47" x 26.4" (1205 x 672 mm) with reduced magnification
- Maximum inspection area: 37.9" x 26.4" (964 x 672 mm)
- 70° oblique angle views (over 30" x 24", 762 x 610 mm):
  - for 360° around a point of interest
  - isocentric manipulator configuration keeps features in field of view
- XiDAT3 digital image intensifier detector with 1600 x 1200 pixels (2.0 Mpixels):
  - 25 fps full-frame 'real time' image acquisition
  - real time image enhancements
- 16-bit digital image processing
- AXiS - Active X-ray Image Stabilisation - anti-vibration control
- Two off 24" TFT LCD operator display monitors
- Nordson DAGE Image Wizard operating software including:
  - automated and manual component fault analysis including BGA & QFN
  - simple to create and use robust automated inspection routines
  - plated through hole (PTH) fill percentage calculation
  - accurate measurement functions
  - automated and manual die attach / area void calculation
  - patented<sup>1</sup> X-ray navigation map for easy fault location
  - simple to use, no complicated joysticks required
- Fully lead-shielded system safety cabinet
  - providing < 1 µSv/hr x-ray leakage
  - meets all international standards
- 1 year system warranty

## Options

- X-Plane™ 2
- Joystick control (X,Y or X,Y & Z)
- Barcode reader
- 2<sup>nd</sup> year system warranty

## System

- Size: 94.5" x 74" x 81.1" (w x d x h)
- Size: 2400 x 1975 x 2060 mm (w x d x h)
- System Weight: 3000 kg (6600 lbs)
- Maximum Sample Weight: 10 kg (22 lbs)
- Power: Single Phase 200 - 230Vac, 16A
- Max.Power Consumption: 1000 W Max.
- Air: 4 - 6 bar clean, dry for anti-vibration
- Operating Temp. Range: 10 - 30°C
- Humidity: < 85% (non-condensing)

For more information, please contact your Nordson DAGE regional office or speak with your local Nordson DAGE representative, all of whom are listed on [www.nordsondage.com](http://www.nordsondage.com)

### Americas

+1 510 683 3930 **Phone**  
sales@nordsondage.com **Email**

### China

+86 512 6665 2008 **Phone**  
sales.ch@nordsondage.com **Email**

### Germany

+49 7021 950690 **Phone**  
sales.de@nordsondage.com **Email**

### Japan

+81 432 995851 **Phone**  
sales.jp@nordsondage.com **Email**

### South East Asia

+65 679 69500 **Phone**  
sales.sg@nordsondage.com **Email**

### United Kingdom

+44 1296 317800 **Phone**  
globalsales@nordsondage.com **Email**

