

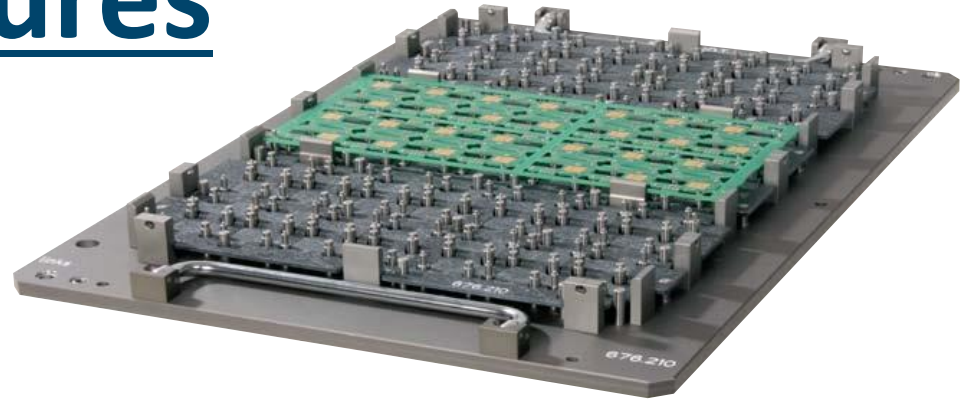
Superior Clamping and Gripping



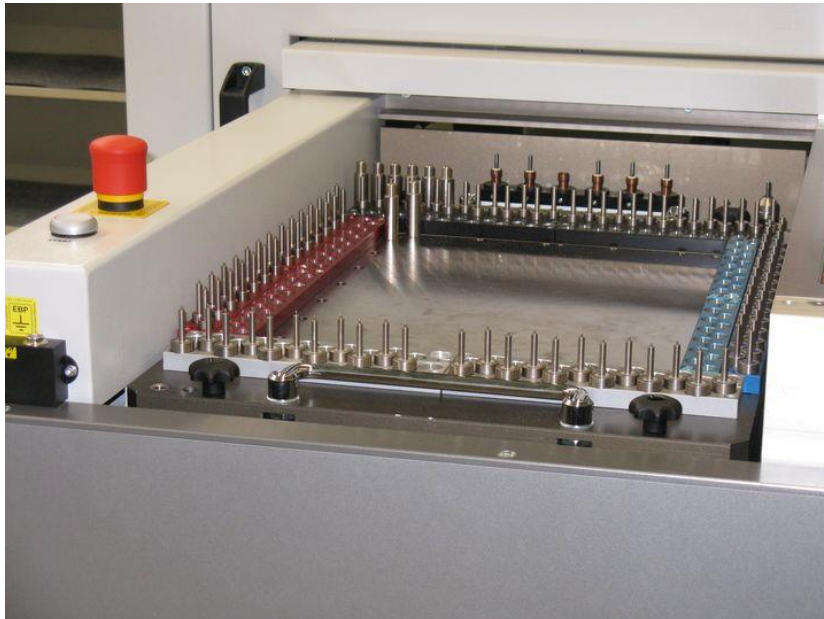
SCHUNK Electronic Solutions Fixtures

SCHUNK Fixtures

Dedicated Fixture



Magnoplate



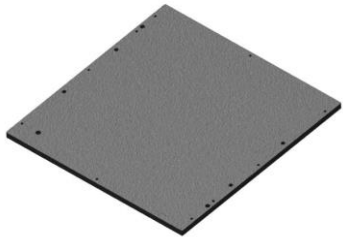
Do-it-yourself fixture



Workpieceholder Package

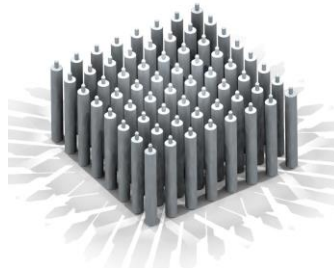
„Do-It Yourself“ Starting Kit

2x base plate



+

100 x location
Pins



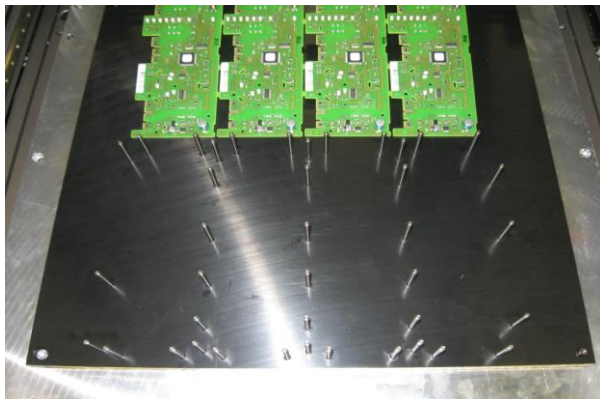
+

1x drill
bit



+

1x Tool for securing
the location pin



Milling area for SAR-1300-B

X,Y = 430mm x 350mm (17"x14")

Workpieceholder Package

„Do-It Yourself“ Starting Kit

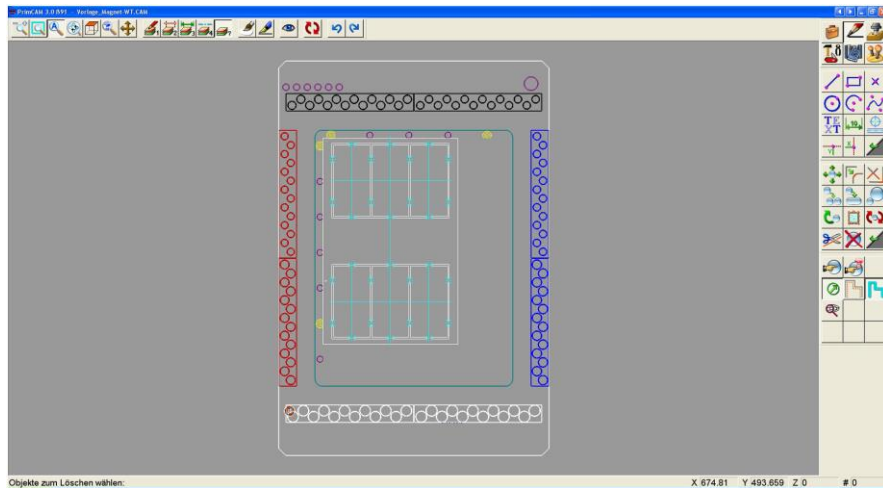
1. Holes are drilled using SCHUNK router
2. Pins are hammered into holes using tools provided
3. PCB Panel is placed onto Pins
4. Product is ready to be Depanelled



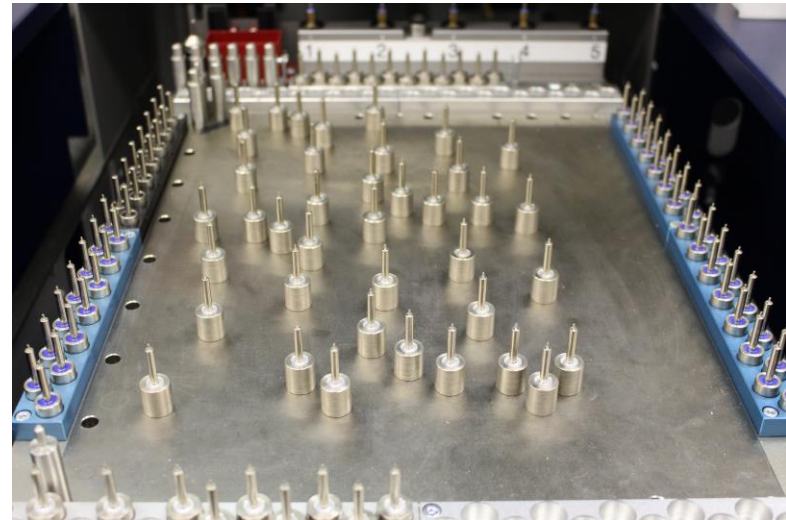
Workpieceholder Package

MAGNOPLATE

Program is written to place the magnets in position to hold Panel



Pins are placed by the router and then fixture is ready



Workpieceholder Package

MAGNOPLATE-Variations:

Magnoplate-Standard:

Working Area 343mm x 261mm (X,Y)

Magnoplate-Plus:

Working Area 417mm x 310mm (X,Y)

Magnoplate-XXL:

Working Area 487mm x 463mm (X,Y)

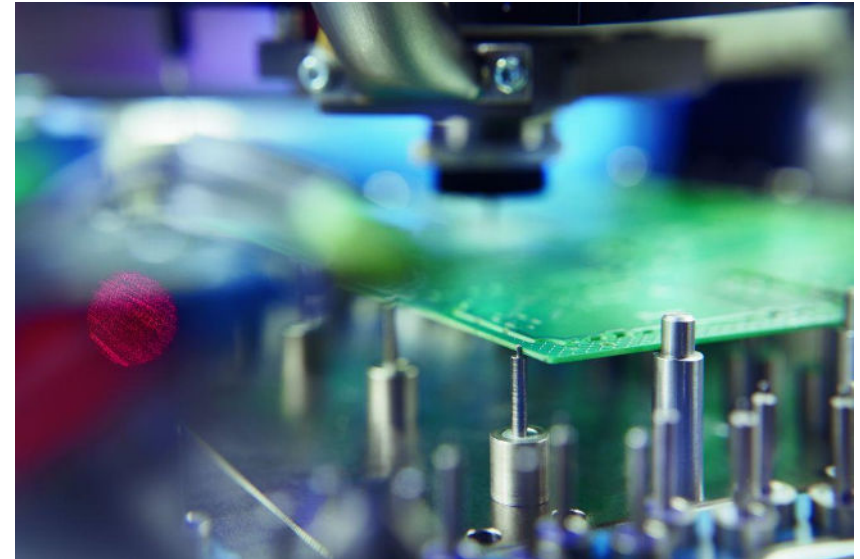


MAGNOPLATE Standard and full equipment

8x magazine/16 x magazine

80x fixing pin/160 x fixing pin

24 x supporting pin/48 x supporting pin



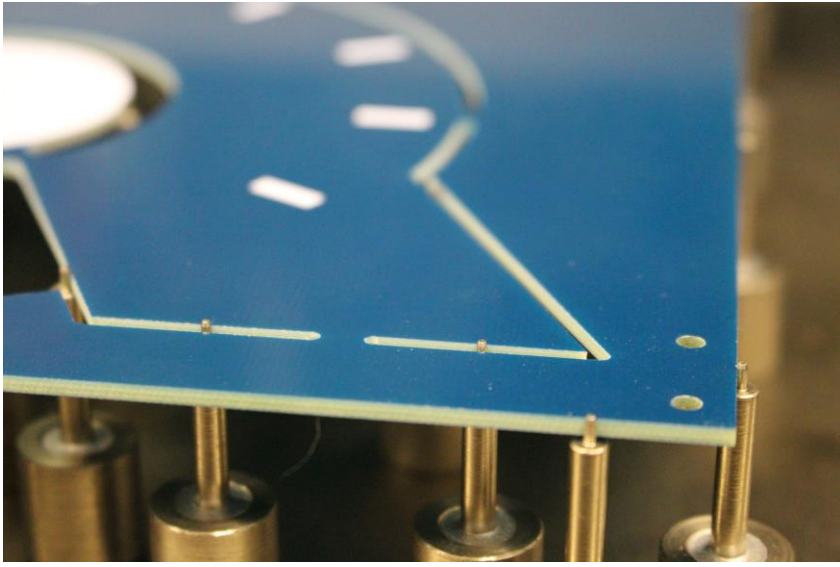
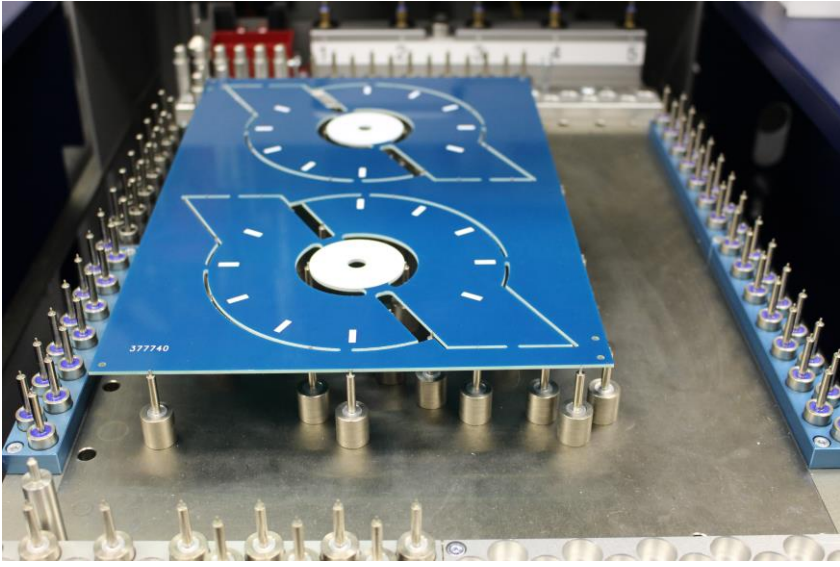
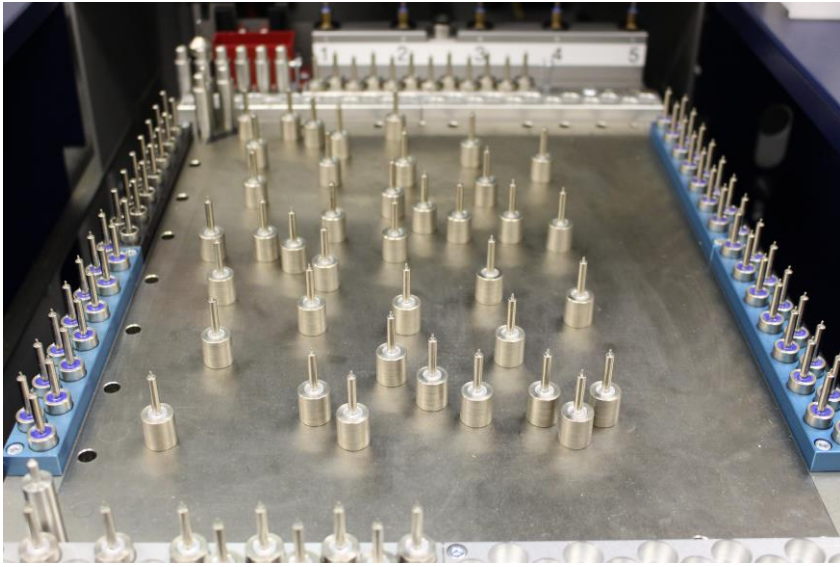
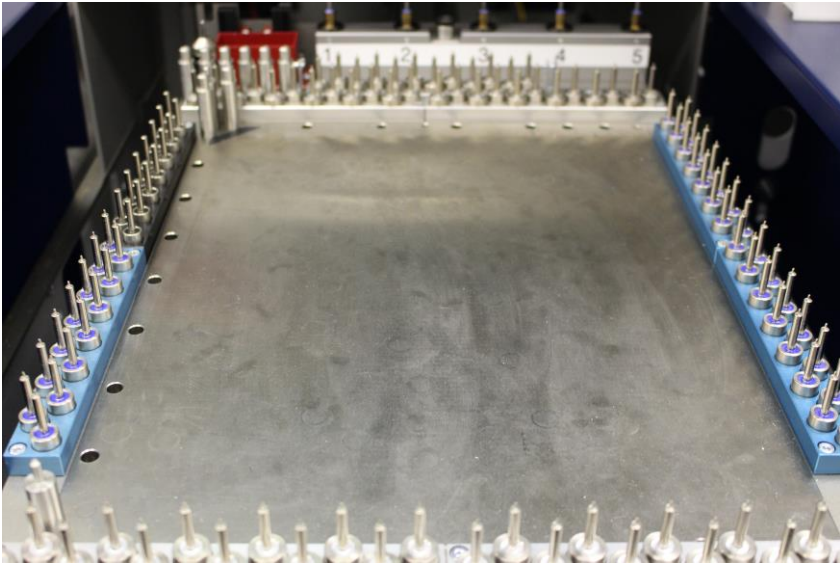
MAGNOPLATE Plus

9x magazine

80x fixing pin

42x supporting pin

Workpieceholder Package



Workpieceholder Package

Flexible Workpiece Holder „MAGNOPLATE“ – Locking Plate

Locking plate is used to avoid magnets from being moved if large number of panels need to be cut

